

# Corrections Victoria

## PRISON RECEPTIONS

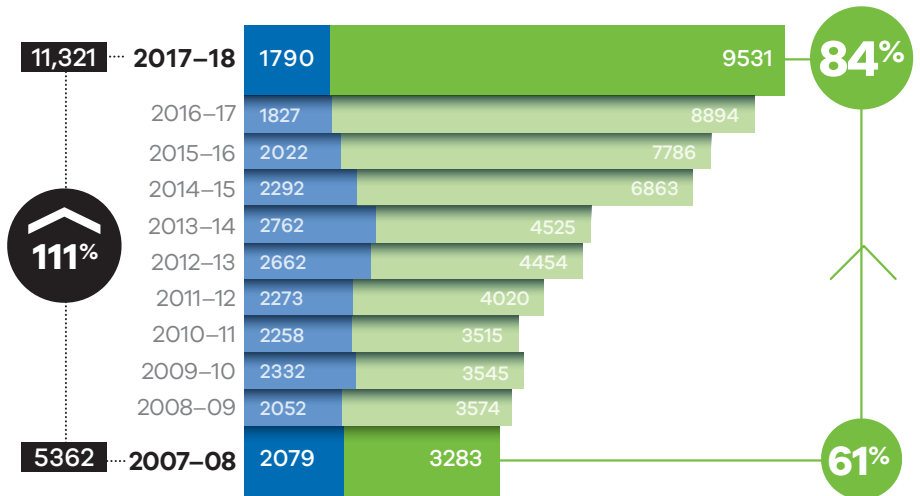
The number of prisoners received into custody each financial year

Figures relate to financial year (1 July to 30 June)

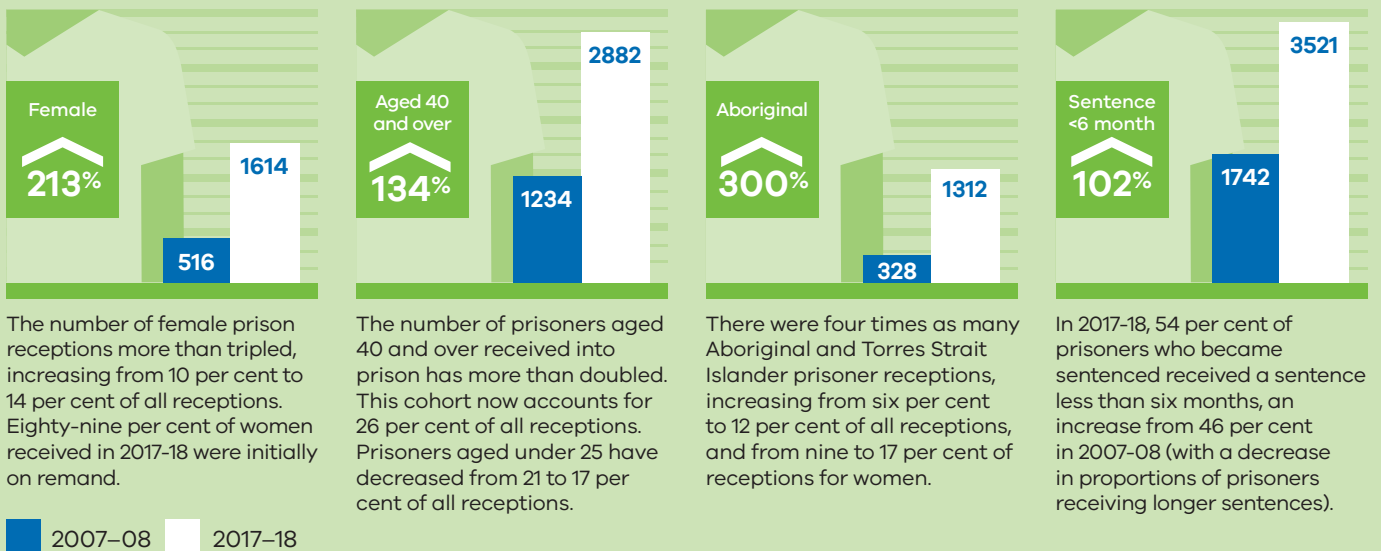
Prison receptions have more than doubled over the last 10 years, and the proportion of prisoners received on remand increased from 61 per cent to 84 per cent of all receptions.

In 2017-18, 16 per cent of receptions reflected prisoners who were received multiple times throughout the year, an increase from 10 per cent in 2007-08.

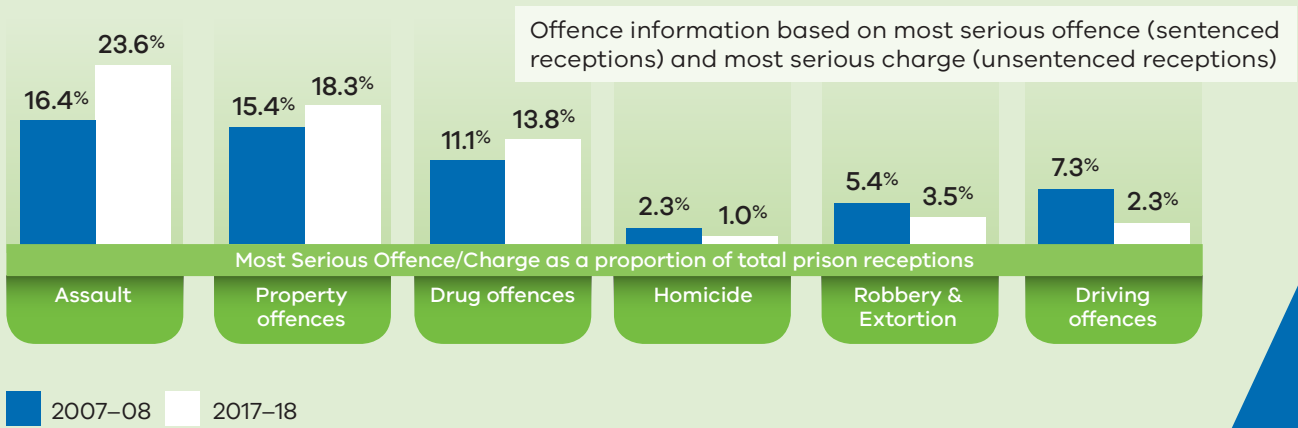
■ Sentenced ■ Unsentenced



Between 2007-08 and 2017-18, the profile of prisoners entering custody has changed, with disproportionate growth seen in a number of cohorts



Receptions for assault, property offences and drug offences have increased (as a proportion of all receptions) over the last 10 years, meanwhile, receptions for homicide, robbery and extortion and driving offences have decreased.



For more information, see Corrections Victoria's [Annual Prisoner Statistics](#)